 **National® Brand**

COMPUTATION NO.

Department _____

Subject _____

Name _____

Address _____

43-648

75 Sheets Quad., 11 3/4" x 9 1/4"



5333 43648 8

Form Inc. • Coppell, TX 75019

Made in Mexico

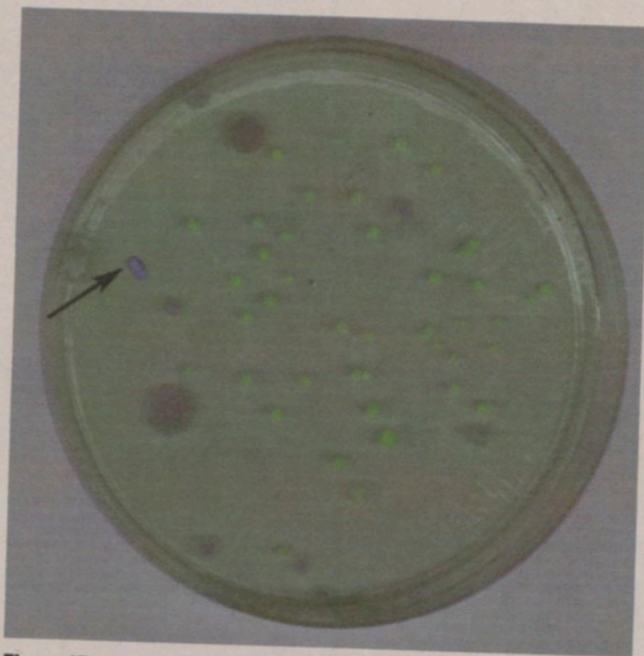
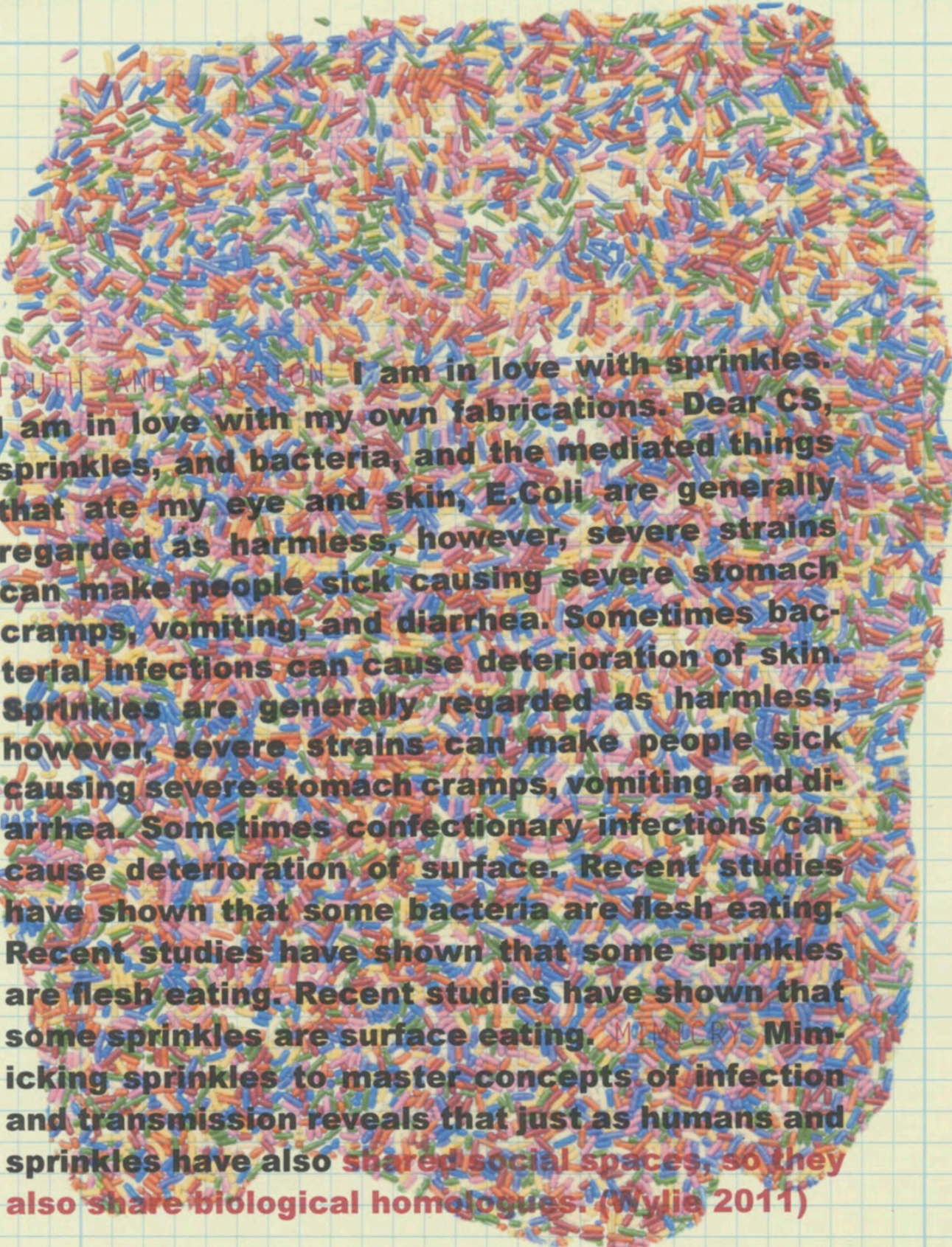
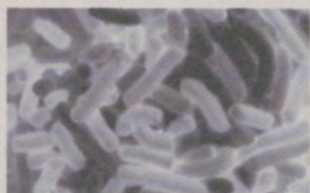


Figure 17
LOOKING LIKE OTHER THINGS: EVERYTHING IS EVERYTHING Privileging sight (and knowing). It's how you can pinpoint the crazy. It's how you figured that you could tell me that I'm in a transitory phase. It's how they used to measure and qualify that I'm not malleable anymore because there is a visual comparison to the adult brain. That the cancer is in my brain, the infection is in my lungs, and not something that is a part of me. Rather that it is all of me. The inside only made from the outside closing in.



TRUTH AND EYE-TON I am in love with sprinkles. I am in love with my own fabrications. Dear CS, sprinkles, and bacteria, and the mediated things that ate my eye and skin, E.Coli are generally regarded as harmless, however, severe strains can make people sick causing severe stomach cramps, vomiting, and diarrhea. Sometimes bacterial infections can cause deterioration of skin. Sprinkles are generally regarded as harmless, however, severe strains can make people sick causing severe stomach cramps, vomiting, and diarrhea. Sometimes confectionary infections can cause deterioration of surface. Recent studies have shown that some bacteria are flesh eating. Recent studies have shown that some sprinkles are flesh eating. Recent studies have shown that some sprinkles are surface eating. **MIMICRY** Mimicking sprinkles to master concepts of infection and transmission reveals that just as humans and sprinkles have also shared social spaces, so they also share biological homologues. (Wylie 2011)

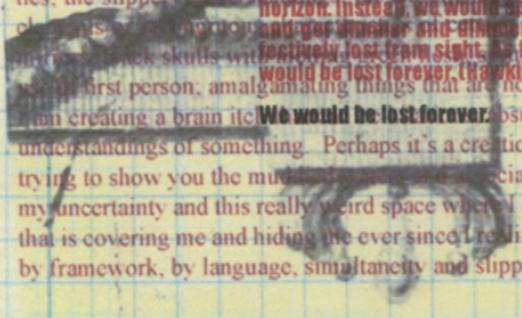


There is a story that I must tell and it's circular. And though concision and exposition are preferred for clarity, sometimes the best way to talk about something is to talk about something else. To circle around an origin point and to flow from one thing to the next, the term "circular ideas" is a consideration of the work of the real, mucous lubricated, microscopic. From the microscopic, we can't see the things that we see, the vasty complex small pieces, even our "eradication" of things, simultaneous and slippage for the potentiality of existence, increasingly difficult to talk about one thing, imageries, contexts, etc. is what I mean by tearing pulling off all the skin and seeing is touching and to bodily trauma manifests face is a concept that is through a flat and then a surface that underlies the pin down. Something slip is it so difficult to establish our body anymore? What of my comprehension like difficulty and uncertainty, medium and the message about something else, but other things. This inchoate performances, installations, it's difficult to say what being created. The meaning, and concepts from many connections that form an experience when meanings, relationships, and vocabularies are generated, broken down, and reconstructed. These new channels of communication, black skulls with first person; amalgamating things that are not commonly experienced together and forcing them together, I am creating a brain it's understandings of something. Perhaps it's a creation and dislodging of trauma of understanding. Perhaps it's me trying to show you the mud and associations in my head. I am inviting you to come wade with me in my uncertainty and this really weird space where I am lying in between layers. There is a thin layer of something that is covering me and hiding me ever since I realized that nothing can be definitively defined and it's all defined by framework, by language, simultaneity and slippage of distinction, and incongruous understandings.

A black hole

When I was eight, I read this book on space that talked about what would happen if you threw someone into a black hole. In the illustration the man gets stretched out like a piece of fruit roll up. I always wondered why no one wanted to donate their body to science didn't ask to strap a camera or something to their body and just hurl themselves out there towards a black hole. Instead of being a body for cutting, I may very well do that. I looked it up, if you stepped into a black hole, your body would most closely resemble toothpaste being extruded out of the tube (Wolchover). If the black hole has a mass of 10 times our sun, you would be torn apart and made into spaghetti (Hawking 2008). Isn't there something kind of beautiful about this? To tie something as narrowly beautiful as throwing oneself into a Black Hole and comparing it to something as mundane as toothpaste or last night's leftover dinner. It is to be established so that we can better understand things. As we hurtle towards into this unknown, we extrude, we get squeezed outside of our body and outside of our mind. This is our brain on thoughts. Under the influence of this void, the brain and body would dissociate into its constituent atoms almost instantly. Talk about simultaneity comes from the ease of language and wordplay. How Approaching the speed of light as we fall into the black hole. The faster we move through space, the slower we move through time. There are things that have been falling in front of us that have experienced an even greater rate of dilation than we have. When we look forward toward the black hole, we see every object that has fallen into it in the past. When we look backwards, we are able to see everything that will ever fall into the black hole (Wolchover). Skin is simultaneously a surface where pathologies and its, I and something with layers, something that is dynamic. Sur- A black hole has a boundary, called the event horizon. It is where gravity is just strong enough to drag light back and prevent it escaping. Perhaps this is misleading. Falling is relational. So if you're not entirely sure where it is or what you are falling towards you will feel suspended. You may even hallucinate. Pilots have even reported that free fall can trigger a feeling of evulsion between the seat and the aircraft. While falling, people may sense themselves as being things, while things may sense that they are people. Traditional modes of seeing and feeling are shattered. Any sense of balance is disrupted. Perspectives are twisted and multiplied. (Lynch 2011) How types of visuality arise when the field is an unstructured and uniform stimulation field. (Ganzfeld Effect 2014) As Wheeler or Penrose says, black holes have no hair, or externally observable classical parameters, one can't tell from the outside what is inside a black hole, apart from its mass and rotation. (Wheeler 1967) This means that a black hole contains a lot of information that is hidden from the outside world. (Hawking 2008) A belly button is a hole that goes nowhere. It is the only hole on the human body that doesn't lead to the internal, it is a scar that marks surface. It alludes to a depth that no longer exists. The only way to truly understand this is to move to the other side of the belly button and find that you are merely holding a skin flap. Perhaps a belly button alludes to something much larger than it is, that the depth it alludes to is not one that itself possesses, but a depth of the external. Someone watching from a distance would never see us cross the event horizon. Instead, we would appear to slow down, and hover just outside and get thinner and dimmer, and redder and redder, until we are effectively lost from sight. As far as the outside world is concerned, we would be lost forever. (Hawking 2008) We would be lost forever, absurd, quietly uncomfortable, and sometimes reveal our surface understandings of something. Perhaps it's a creation and dislodging of trauma of understanding. Perhaps it's me trying to show you the mud and associations in my head. I am inviting you to come wade with me in my uncertainty and this really weird space where I am lying in between layers. There is a thin layer of something that is covering me and hiding me ever since I realized that nothing can be definitively defined and it's all defined by framework, by language, simultaneity and slippage of distinction, and incongruous understandings.

suppose that is where The work came from ral, fatty, thick, corpo- the same time abstract and pathways, and the ulations. These are the uage brings to life these warfare, infections, or e imperceivable. Lan- es to be established so that we can better understand things provoke the trauma of of speech, that allow word, that it becomes word can have infinite come entangled. This to extract meaning and comes from. Because Skin is simultaneously a surface where pathologies and something that is dynamic. Sur- arthical understandings, page, wading through something difficult to define boundaries. Why e cannot feel or tie to something that darts out page best describes the not quite another. The and representations of eness and in the pro- and grows. The objects, on a perpetual cycle of and re-contextualiza- understanding, vocabulary, understandings and varied understandings come from the volatile experi- and use of incongruous data skin grafts, tumor jokes, and impersonal



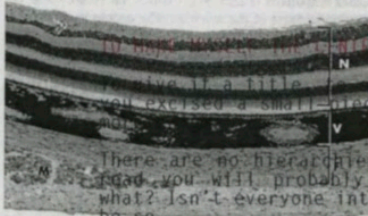
NAVEL GAZING

I lie on the scanner, my belly pressed to the glass
Bellybutton to glass to screen to windows to the soul

An origin point. A proof of living, of humanity Take
the case of object 1. Model. Objectified. Problematic
Now without belly button. Without the point of origin
no matter how facsimile the body is Breasts vagina
legs, arms, firm abs, she is not like us This button a
seal of authenticity and humanity

What happens when surface reading meets the origin with
out destination?

Does something infinitesimally grand happen when the
universe emanates from a point? When this tiny point
becomes the center of something more profound



TO HAVE MADE THE CENTER OF MY OWN UNIVERSE

To give it a title, to say it is a piece is to say that
you excised a small piece of something even larger and

There are no hierarchies when everything goes As you
read you will probably think at various points "so
what? Isn't everyone interested in this?" Yes No May-
be so.

When you ask me what this piece is about
I can only make myself a point of it all

LAYERS OF THE EYE: The three layers of the eyeball, from outside
in, are the fibrous tunic (F), vascular tunic (V), and neural tunic (N).
An ocular muscle is also visible.

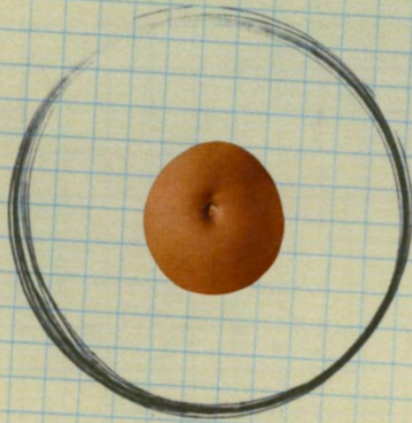
Just as the scientist himself became the very thing he
was studying in the laboratory, we are finding that we
share so much more with the things we are tangled with

I cannot simply stop at the surface of this I will not
just tell you about "themes" and forms I am interested
in. I am going to cut because knowledge is not made for
understanding; it is made for cutting (Foucault 1984)
I cut crawl in rest in, seal, become, and repeat not
necessarily in that order. The compulsions that come
with knowing the rules but not giving a fuck I want
you to know I know your rules and I am choosing not to
play by them.

I hes tate to put into writing the basic motivations
that reveal the bare bones question, not hidden in am-
biguities of an active human consciousness of trying
to figure out how he or she has solved or not solved
being alive

What is the point of picking a point of fixation and
devoting oneself to incomplete understandings of life,
objects and things? To pick at the bellybutton

To choose a point of departure only to find that every-
thing is vastly incomplete and then having to add more
and more limited perceptions to get closer to never
touching it but always closer. To fixate on everything
to find yourself confronting the immensity of infinities
and certain flavors of infinite that are not unlike that
of the irrational



EXPERIMENTAL PROCEDURES

Cell Culture

Human embryonic kidney (HEK293) and HT1080 cell lines were maintained in DMEM with 10% fetal calf serum. Cells were grown in DMEM with 10% fetal calf serum. Cells were harvested after 26 hr of serum starvation and Namp1 expression was analyzed by western blotting.

at -80°C prior to NAD⁺ analysis by HPLC/MALDI/MS. Detailed protocols are described in the Supplemental Data.

Drug Treatments and Cell Death Assays

HEK293 and HT1080 cells at less than 85% confluency were treated with MMS (1.2 mM) for 6–8.5 hr and 8–17 hr, respectively. Transiently transfected cells were washed three times with PBS to remove residual transfection reagents before treating with MMS. HEK293 cells and HT1080 cells were exposed to etoposide for 72 hr or 46 hr at 120 or 40 μM, respectively. HT1080 cells were exposed to camptothecin at 14 μM for 23 hr. After drug treatments, cells were harvested by trypsinization, pelleted by centrifugation, and resuspended in PBS containing 2% FBS. Cell death was analyzed by FACS using propidium iodide (PI) staining. In cells transiently transfected with mNAMP1/MSCV, siRNA, or FAM-labeled siRNA oligos and cotransfected with FAM-labeled scrambled siRNA oligos, percent cell death was determined as the proportion of PI/GFP- or PI/FAM-positive cells versus the total number of cells with green fluorescence.

Supernatant and cell lysates were collected and analyzed for NAD⁺ and NAD^H by HPLC/MALDI/MS. Total cellular NAD⁺ concentrations were calculated by dividing the quantity of NAD⁺ per cell by the mean cell volume (MCV) as measured by a Coulter counter, which for HT1080 was 2183.95 fl and for HEK293 was 1691.04 fl.

Animal Experiments

To assess Namp1 expression in vivo, Sprague-Dawley rats (120–150 g) were obtained from Charles River Laboratories and randomly assigned to control and experimental groups of four animals. The control group was fed ad libitum (AL) with a 78% sucrose diet prepared by Research Diets Inc. The experimental group was fasted for 24 hr before being sacrificed. Liver tissue for RNA extraction was stored in RNAlater reagent (QIAGEN). All other samples were frozen in liquid nitrogen and stored at -80°C until use. To assess mitochondrial Namp1 and NAD⁺ in aged rats, F344 (F344) rats were bred and reared in a vivarium at the Gerontology Research Center (GRC, Baltimore, MD). From weaning (2 weeks), the rats were housed individually in standard plastic cages with beta chip wood bedding. Control animals were fed a NIH-F311 standard diet AL. The procedures for preparation of mitochondrial and liver lysates are described in the Supplemental Data.

Supplemental Data

Supplemental Data include Supplemental Experimental Procedures, eight figures, and Supplemental References and can be found with the online version of this article at www.sciencedirect.com.

ACKNOWLEDGMENTS

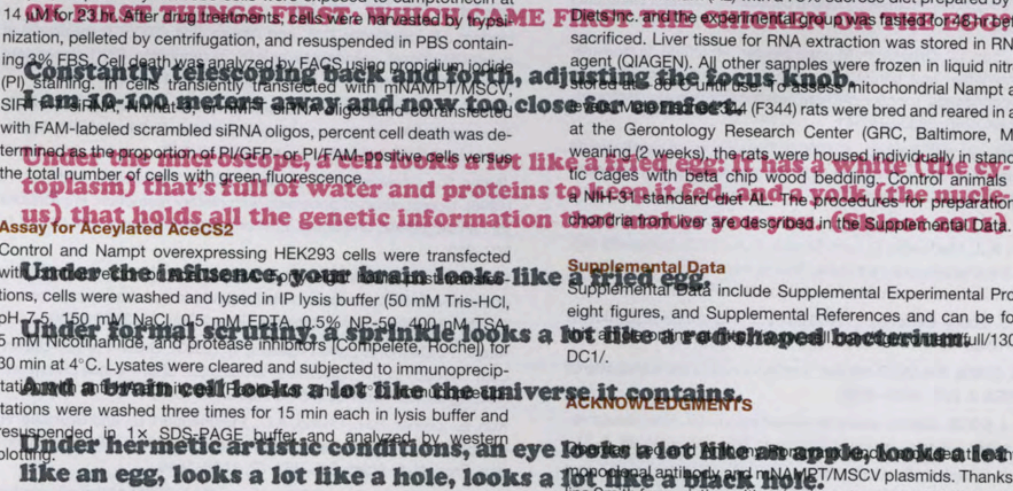
We thank Dr. Robert M. Waymouth for providing anti-Namp1 monoclonal antibody and mNAMP1/MSCV plasmids. Thanks to Carolina Smith for assisting with animals and surgery, Jill Milne for providing EX-527 and Sean Armour for technical advice. H.Y. was supported by the Howard Hughes Medical Institute through the Howard Hughes Medical Institute American Heart Association Award, D.L. by a National Eye Institute training grant, and J.J.C. by a Howard Hughes Medical Institute Predoctoral Fellowship. This study was supported in part by the intramural program of the National Institutes on Aging. D.A.S. was an Ellison Medical Foundation New Scholar. A.R. and T.M. are supported by grants from the NIH and the Leducq Foundation. The Sauve lab is supported by NIH grant R01 DK 073466, the Sinclair lab by NIH grants RO1GM068072, RO1AG028730, PO1 AG027916 and the Paul F. Glenn Laboratories for the Biological Mechanisms of Aging. D.A.S. and A.A.S. are consultants to Sirtris Pharmaceuticals, a company aiming to treat diseases by modulating sirtuins. D.A.S. is a cofounder of Sirtris Pharmaceuticals and sits on their advisory board and board of

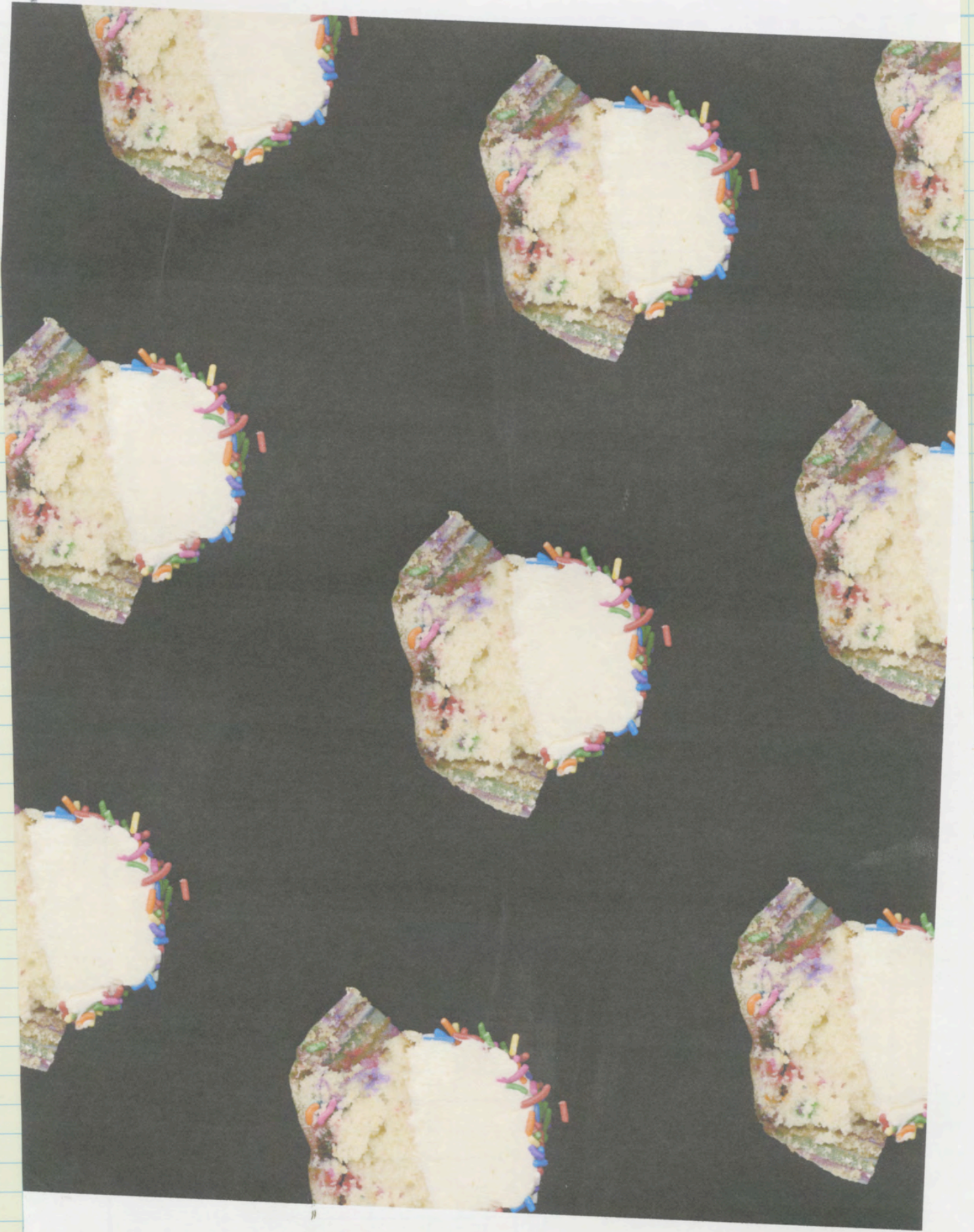
Assay for Acetylated AceCS2

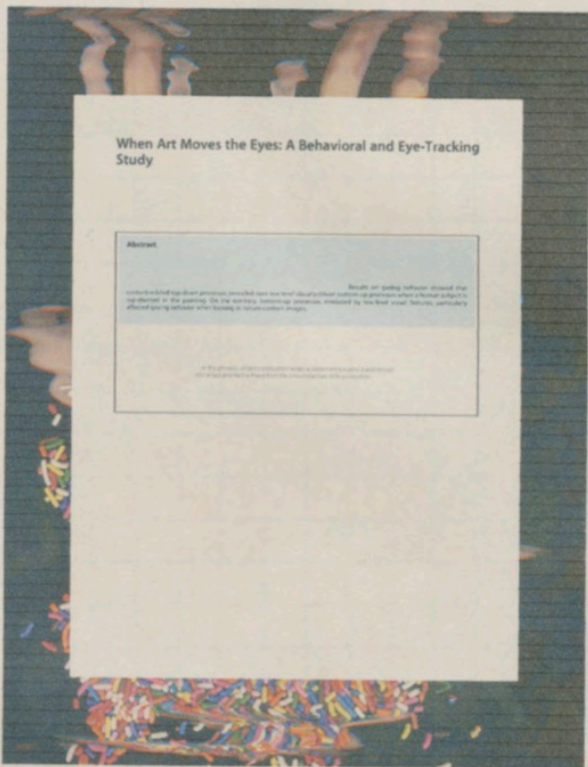
Control and Namp1 overexpressing HEK293 cells were transfected with pEGFP-N1 or pEGFP-N1-Namp1. Cells were harvested in triplicate, washed and lysed in IP lysis buffer (50 mM Tris-HCl, pH 7.5, 150 mM NaCl, 0.5 mM EDTA, 0.5% NP-50, 400 nM TSA, 5 mM Nicotinamide, and protease inhibitors [Complete, Roche]) for 30 min at 4°C. Lysates were cleared and subjected to immunoprecipitation with anti-AceCS2 antibody. The immunoprecipitates were washed three times for 15 min each in lysis buffer and resuspended in 1x SDS-PAGE buffer and analyzed by western blotting.

Cell Fractionation and Drug Treatment of Mitochondria

Using a differential centrifugation and sucrose gradient procedure with slight modifications (Schwer et al., 2002). For drug treatment of mitochondria, fresh mitochondria were obtained from livers excised from fed young male rats. Half of the liver homogenate was used for mitochondrial isolation using a commercially available kit as described by manufacturer's instructions, designated Protocol 1 (Pierce Mitochondrial Isolation kit, Rockford, IL). The other half of the original homogenate was subjected to a differential centrifugation protocol to isolate mitochondria (Protocol 2). Mitochondria (500 μl) were added to a 48-well plate and treated with methylmethane sulfonate (MMS) at 1:1000 dilution and/or FK866 (10 nM) for 30 min at 37°C. Suspensions were spun down for 1 min at 14,000 rpm at 4°C and pellets were stored







When Art Moves the Eyes: A Behavioral and Eye-Tracking Study

Abstract

Results of looking behavior showed that...
...of the artwork, looking up...
...of the artwork, looking up...
...of the artwork, looking up...

© 2010 University of Illinois at Chicago. All rights reserved.



A LABNOTEBOOK AND A TRUTH

A lab notebook's observations are always competing for a place in some unfinished truth. (Shields 2010)

The breeding of vagueness of the Romantics is different from the ad hoc protectionism in which one modifies a challenged hypothesis without increasing its content. For there is a difference between bringing a scene into soft focus and leaving it out of focus (Sorensen 1997) What I look at out of focus and then in focus, the edges, the crevice, the background, it's all parts of the same source. In the end it's all the same, and then again it isn't the same

CONFUSED BY THE (WORD) GAME?

Consider that pizzeria is not a greasy spoon, and yet... that pizzeria is a greasy spoon. Your car isn't a lemon, and yet... your car is a lemon. This knowledge doesn't weigh a ton, and yet... it weighs a ton. (Hofstadter and Sander 2013)

FOCUS AND ATTENTION

Depending on where you shifted your attention to abstraction, simultaneity of existence and abstractions allowed themselves to become visible. If we focus on different things, is it a different thing entirely? Or is it ultimately the same?

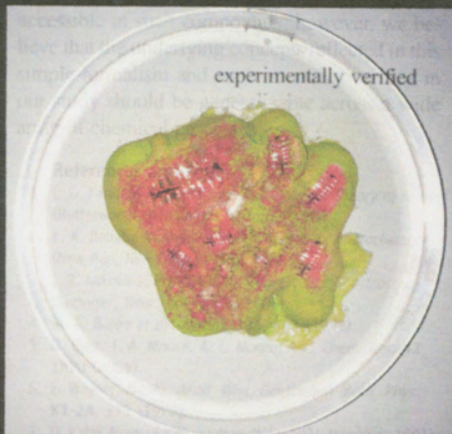
If we only focus on a part of the SINE wave it can appear to be a linear plot. If we only focus on the black boy's organs that weren't hit by the bullet in the pathology report, then the black body appears healthy and fine. If we're only looking at shiny celebrities and perfectly curated flowers and products and makeup then we aren't looking at the bullshit in the world. But it's all part of the same whole.

That's the problem isn't it? When you're only looking for the red objects, you're only going to see the red objects. How the fuck are you going to see the blue objects? Red pill or blue pill. When you're looking at the things that work, things will appear to work

(W)hole. I saw this on Andre's wall once. He made a typo. But that's what it is. The immensity of the whole, implodes, becomes a black (w)hole of sorts. It becomes the ultimate void

a surprisingly simple explanation

issues raised herein will manifest more readily in inorganic rather than organic systems



Graphitic Tribological Layers in Metal-on-Metal Hip Replacements

Y. Ding,¹ R. Poyraz,² M. A. Wimmer,¹ E. J. Jacobs,^{1,2} A. Fisher,^{1,2} L. D. Marks^{1,2}

Arthritis is a leading cause of disability, and when nonoperative methods have failed, a prosthetic hip implant is a cost-effective and clinically successful treatment. Metal-on-metal replacements are an attractive implant technology, a low-wear alternative to metal-on-acycloplastics. Despite a relatively long history, sliding occurs to these implants, except that proteins play a critical role and that there is a tribological layer on the metal surface. We report evidence for graphitic material in the tribological layer in metal-on-metal hip replacements retrieved from patients. As graphite is a solid lubricant, its presence helps to explain why these components exhibit low wear and suggests methods of improving their performance. This raises the issue of the physiological effects of graphitic wear.

Arthritis, or rheumatism, is the leading cause of disability affecting an estimated 8.6 million people in the United States, or about 20% of the adult population. The National Health and Human Services Administration

estimates that about 10% of the population, with the highest prevalence of arthritis-related disability, will require hip replacement. For individuals afflicted with end-stage arthritis of the hip, artificiality in the lower limb articulation and

functionally successful replacement is generally required. Total hip arthroplasty (THA) is becoming increasingly popular, with annual rates of performance improvements. According to the Department for Postoperative Experiments and Development (DPE) from 1990 to 1995, the largest number of replacements per capita, and the U.S. performs the most prosthetic hip arthroplasties in the world. In 1995, 102,000 primary total hip replacements were performed annually in the U.S. by 21,000 orthopedic surgeons, resulting in approximately 100,000 hip arthroplasties. Hip arthroplasty is a major cause of morbidity, disability, and the need for disability and retirement. In addition, the impact on the national productivity is estimated

Department of Materials Science and Engineering, Johns Hopkins University, Baltimore, MD 21218; ²Department of Mechanical Engineering, University of Toronto, Toronto, Ontario, Canada M5S 1A5. Address correspondence to: Y. Ding, Johns Hopkins University, Department of Materials Science and Engineering, 3430 North Ave., Baltimore, MD 21218.

Received 10/15/98; revised 1/15/99; accepted 2/15/99. This article is part of the special issue on "Graphitic Tribological Layers in Metal-on-Metal Hip Replacements."



